

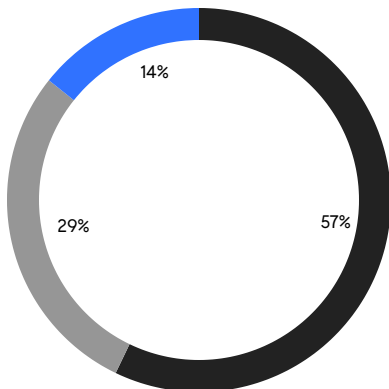
BROOKLYN WEEKLY LUXURY REPORT



360 FURMAN ST. UNIT PH401

RESIDENTIAL CONTRACTS
\$2 MILLION AND UP

- NORTHWEST BROOKLYN
- NORTH BROOKLYN
- EAST BROOKLYN



7

CONTRACTS SIGNED
THIS WEEK

\$27,724,000

TOTAL CONTRACT VOLUME

The Brooklyn luxury real estate market, defined as all properties priced \$2M and above, saw 7 contracts signed this week, made up of 2 condos, and 5 houses. The previous week saw 13 deals. For more information or data, please reach out to a Compass agent.

\$3,960,572

AVERAGE ASKING PRICE

\$4,200,000

MEDIAN ASKING PRICE

\$1,474

AVERAGE PPSF

3%

AVERAGE DISCOUNT

\$27,724,000

TOTAL VOLUME

82

AVERAGE DAYS ON MARKET

359 Bergen Street in Park Slope entered contract this week, with a last asking price of \$5,500,000. Originally built in 1910, this brownstone spans 3,108 square feet with 7 beds and 3 full baths. It features a recent gut renovation, an open concept living room, dining room, and kitchen, high ceilings, wide-plank walnut floors, a working fireplace with marble mantel, floor-to-ceiling windows, a landscaped backyard and deck, and much more.

Also signed this week was Unit 4S at 185 Plymouth Street in DUMBO, with a last asking price of \$4,800,000. Completed in 2014, this condo unit spans 3,300 square feet with 3 beds and 2 full baths. It features a windowed home office and library/media room, an open chef's kitchen, a 115-square-foot terrace, high ceilings, walk-in storage rooms, a curtain wall of glass, a private laundry room, and much more. The building provides a state-of-the-art gym, bike storage, a 24-hour virtual doorman, and many other amenities.

2

CONDO DEAL(S)

0

CO-OP DEAL(S)

5

TOWNHOUSE DEAL(S)

\$3,549,500

AVERAGE ASKING PRICE

\$0

AVERAGE ASKING PRICE

\$4,125,000

AVERAGE ASKING PRICE

\$3,549,500

MEDIAN ASKING PRICE

\$0

MEDIAN ASKING PRICE

\$4,200,000

MEDIAN ASKING PRICE

\$1,553

AVERAGE PPSF

\$1,442

AVERAGE PPSF

2,347

AVERAGE SQFT

2,914

AVERAGE SQFT



359 BERGEN ST

Park Slope

TYPE	TOWNHOUSE	STATUS	CONTRACT	ASK	\$5,500,000	INITIAL	\$5,950,000
SQFT	3,108	PPSF	\$1,770	BEDS	7	BATHS	3.5
FEES	\$930	DOM	186				



185 PLYMOUTH ST #4S

Dumbo

TYPE	CONDO	STATUS	CONTRACT	ASK	\$4,800,000	INITIAL	\$4,800,000
SQFT	3,300	PPSF	\$1,455	BEDS	4	BATHS	2.5
FEES	\$5,687	DOM	44				



483 DRIGGS AVE

Williamsburg

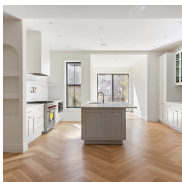
TYPE	TOWNHOUSE	STATUS	CONTRACT	ASK	\$4,350,000	INITIAL	\$4,350,000
SQFT	2,875	PPSF	\$1,514	BEDS	2	BATHS	2
FEES	\$8,041	DOM	57				



185 LAFAYETTE AVE

Fort Greene

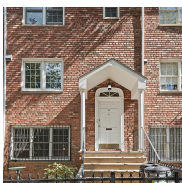
TYPE	TOWNHOUSE	STATUS	CONTRACT	ASK	\$4,200,000	INITIAL	\$4,900,000
SQFT	2,480	PPSF	\$1,694	BEDS	4	BATHS	3
FEES	\$733	DOM	60				



700 PARK PLACE

Crown Heights

TYPE	TOWNHOUSE	STATUS	CONTRACT	ASK	\$3,375,000	INITIAL	\$3,375,000
SQFT	3,663	PPSF	\$921	BEDS	5	BATHS	4
FEES	\$320	DOM	3				



45 TOMPKINS PL

Cobble Hill

TYPE	TOWNHOUSE	STATUS	CONTRACT	ASK	\$3,200,000	INITIAL	\$3,200,000
SQFT	2,442	PPSF	\$1,311	BEDS	5	BATHS	2.5
FEES	\$1,146	DOM	58				

Compass is a licensed real estate broker and abides by Equal Housing Opportunity laws. All material presented herein is intended for informational purposes only. Information is compiled from sources deemed reliable but is subject to errors, omissions, changes in price, condition, sale, or withdrawal without notice. No statement is made as to the accuracy of any description. All measurements and square footages are approximate. This is not intended to solicit property already listed. Nothing herein shall be construed as legal, accounting or other professional advice outside the realm of real estate brokerage.



61 NORTH HENRY ST #6

Greenpoint

TYPE	CONDO	STATUS	CONTRACT	ASK	\$2,299,000	INITIAL	\$2,299,000
SQFT	1,393	PPSF	\$1,651	BEDS	3	BATHS	2
FEES	\$1,023	DOM	161				

Compass is a licensed real estate broker and abides by Equal Housing Opportunity laws. All material presented herein is intended for informational purposes only. Information is compiled from sources deemed reliable but is subject to errors, omissions, changes in price, condition, sale, or withdrawal without notice. No statement is made as to the accuracy of any description. All measurements and square footages are approximate. This is not intended to solicit property already listed. Nothing herein shall be construed as legal, accounting or other professional advice outside the realm of real estate brokerage.

© 2023 Compass. This report and information provided in this report are proprietary to Compass and may not be sold, used or reprinted, in whole or part, without the prior written consent in each instance of Compass. Data is subject to revision. Sourced from Compass proprietary database. All rights reserved.

[compass.com](https://www.compass.com)